

IP PTZ CAMERA CONTROLLER

Intuitive screen menu. Master multiple PTZ cameras.



Model NO.:

PKC3500



5 inch Screen



Real-time Monitoring



Track Recording



NDI / VISCA / ONVIF
Multiple Protocols



Up to 255 Cameras



POE Powered



**5 inch Screen
Monitoring Camera in Real Time**



IP/ RS-422/ RS-485/ RS-232 Control

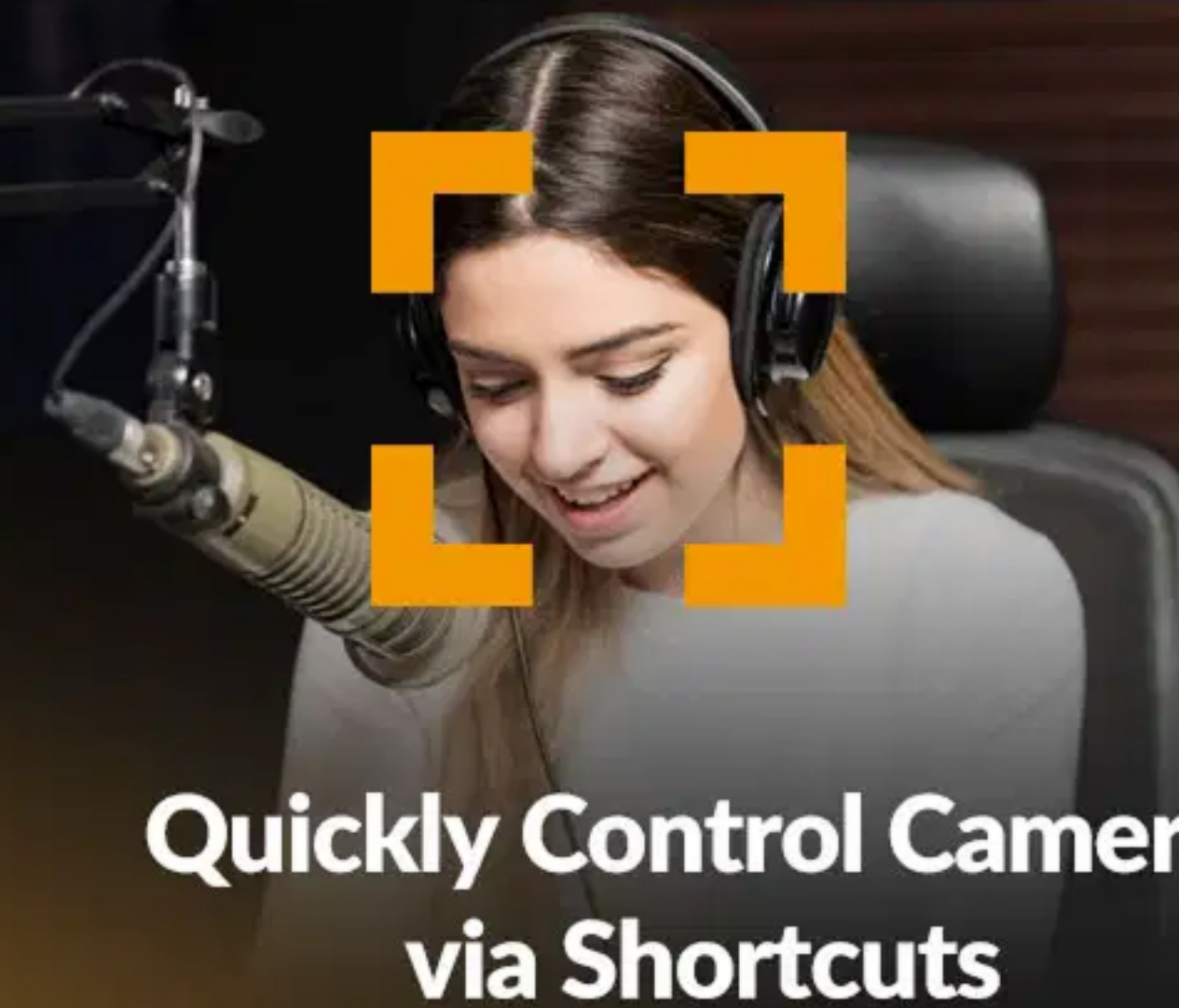


**Control Up to
255 IP Cameras
255 Presets**

**Control Protocol by
NDI, VISCA, IP VISCA
Onvif and Pelco P&D**



**Track Recording
and Playback**

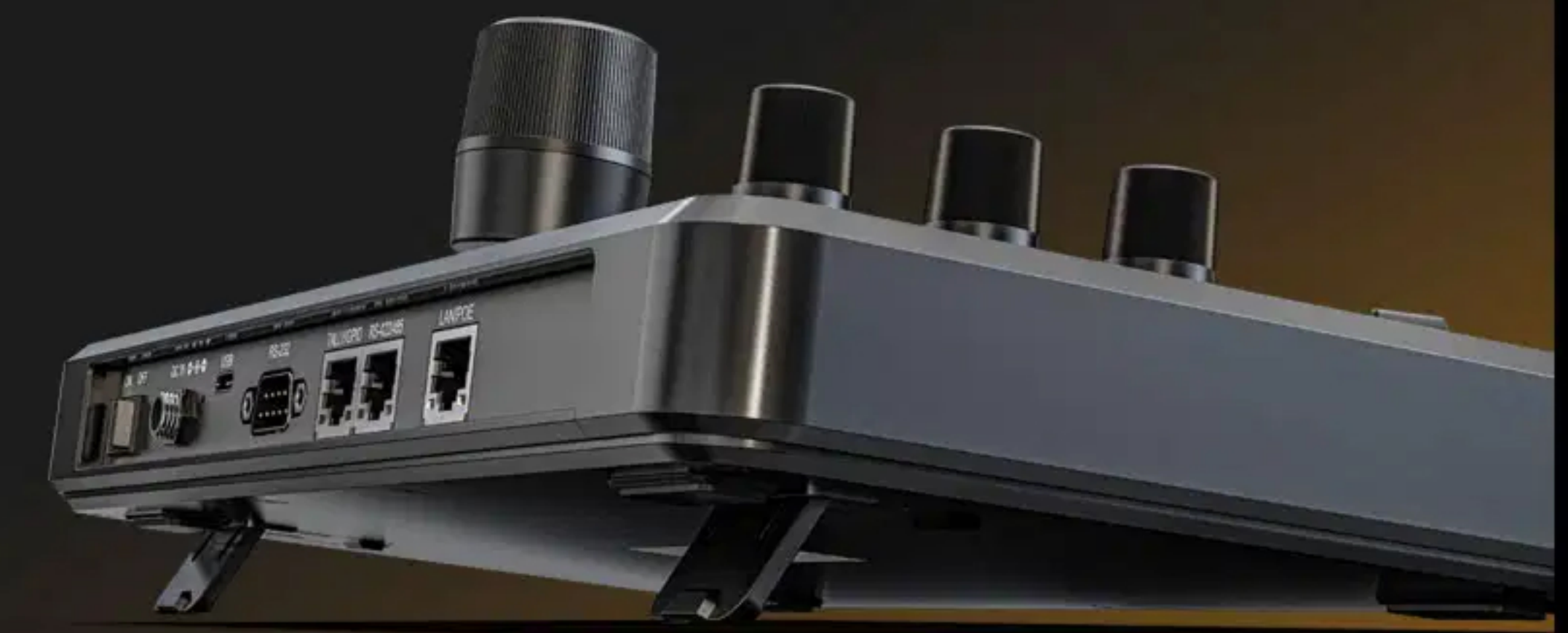


**Quickly Control Camera
via Shortcuts**



POE Power Supply

Sync Controller via GPIO



5" HD Display for Intuitive PTZ Control

The PTZ camera controller features a 5-inch HD screen that clearly presents real-time status as well as intuitive and well-organized menu layout which ensures a more efficient and professional control experience, making every action is clear and easy, enhancing both convenience and precision.





Real-time Preview of Your Camera

NDI
(Optional)

RTSP

ONVIF

The controller supports decoding under NDI®|HX2(Optional), RTSP and ONVIF protocol which allows simultaneous real-time preview of the camera video streams on the 5-inch screen and adjust your control accordingly.



Track Recording and Playback

Record camera path (pan, tilt, zoom)



Track Recording and Playback

The PTZ camera controller supports track loop function which allows you to record camera path (pan, tilt, zoom) and replay it whenever required without having to manually control the camera.

5" HD Screen

5-inch HD screen, and support monitoring camera in real time.

Camera Quick Access Control

Quickly control camera's iris, shutter, gain, focus, for optimal PTZ camera performance.

Camera Setting & CAM PWR, OSD

Quickly search, add and call up to 255 cameras
3 shortcut keys used to control camera power, open the camera and controller menu.

Zoom Adjust

Supports camera manual focus.

Assignable Functions

It can store up to 7 user-assignable keys.

4D Joystick

Use for pan/tilt speed, and zoom speed control and controller own menu settings.

Position Setting

Quickly set and wake up to 255 camera positions.

Multi-function Digital Panel

Used to assist input numbers, letters, etc.





Power-over-Ethernet (PoE)

Control up to total of 255 IP cameras on a single network with PoE support. You can use not only traditional DC power supply but also POE power supply to set up in various locations.

1× RS-232 & 1× RS-485 /422 Control Interfaces

RS-232, RS-422 and RS-485 communication support protocols such as PELCO-D, PELCO-P and VISCA,. Each serial port can connect up to 7 cameras under the Visca protocol.

IP Control Interface

IP control automates searching for network IP cameras and assign IP addresses easily. Supports NDI (Optional), ONVIF and IP Visca protocols. The PKC3500 enables users to easily control up to 255 IP cameras.



POWER SWITCH

DC 12V IN USB-C

RS232

TALLY / GPIO

RS422 / 485
PELCO-D, PELCO-P, VISCA

LAN (POE)
NDI(Optional), IP VISCA, ONVIF

Camera Control Protocol

The controller has a variety of control interfaces including IP, RS-422/ RS-485/ RS-232. The rich control interface makes it easy to match camera connections of different interfaces. It offers cross protocol mix-control on one controller operating protocol by ONVIF, VISCA, IP VISCA and Pelco P&D, as well as NDI (*NDI For Optional).





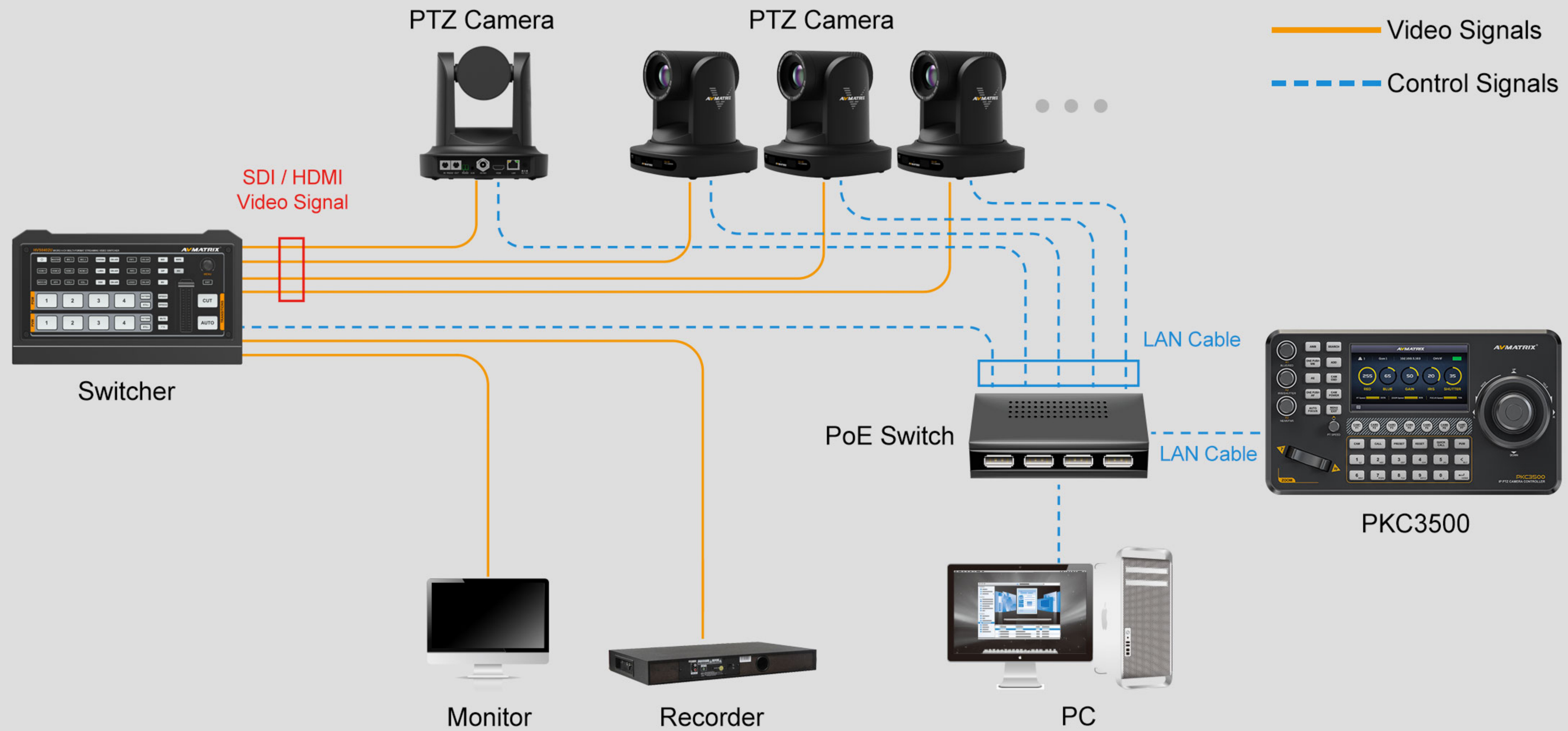
Sync Controller with Switcher

Via GPIO

Equipped with GPIO, the controller can seamlessly integrate with switchers and tally system, enabling synchronized camera and video selection and simplifying your operations.

Connection Diagram

Adopt RS-232, RS-422, RS-485 and IP(RJ45) multiple interface control signal, up to 255 cameras can be connected. The following application workflow shows how to control multiple cameras through IP Interface through the PTZ controller





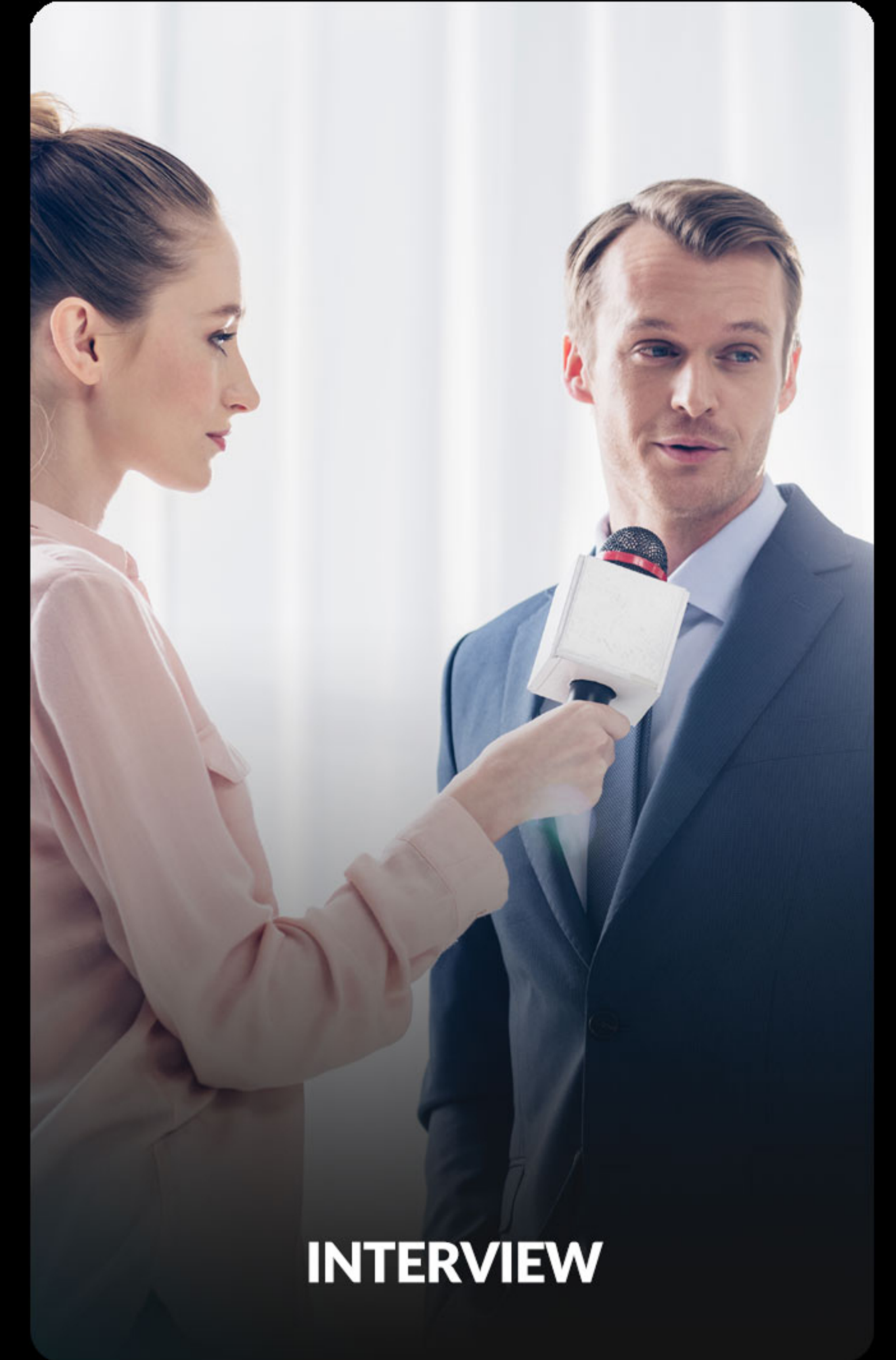
CHURCH



CONCERT



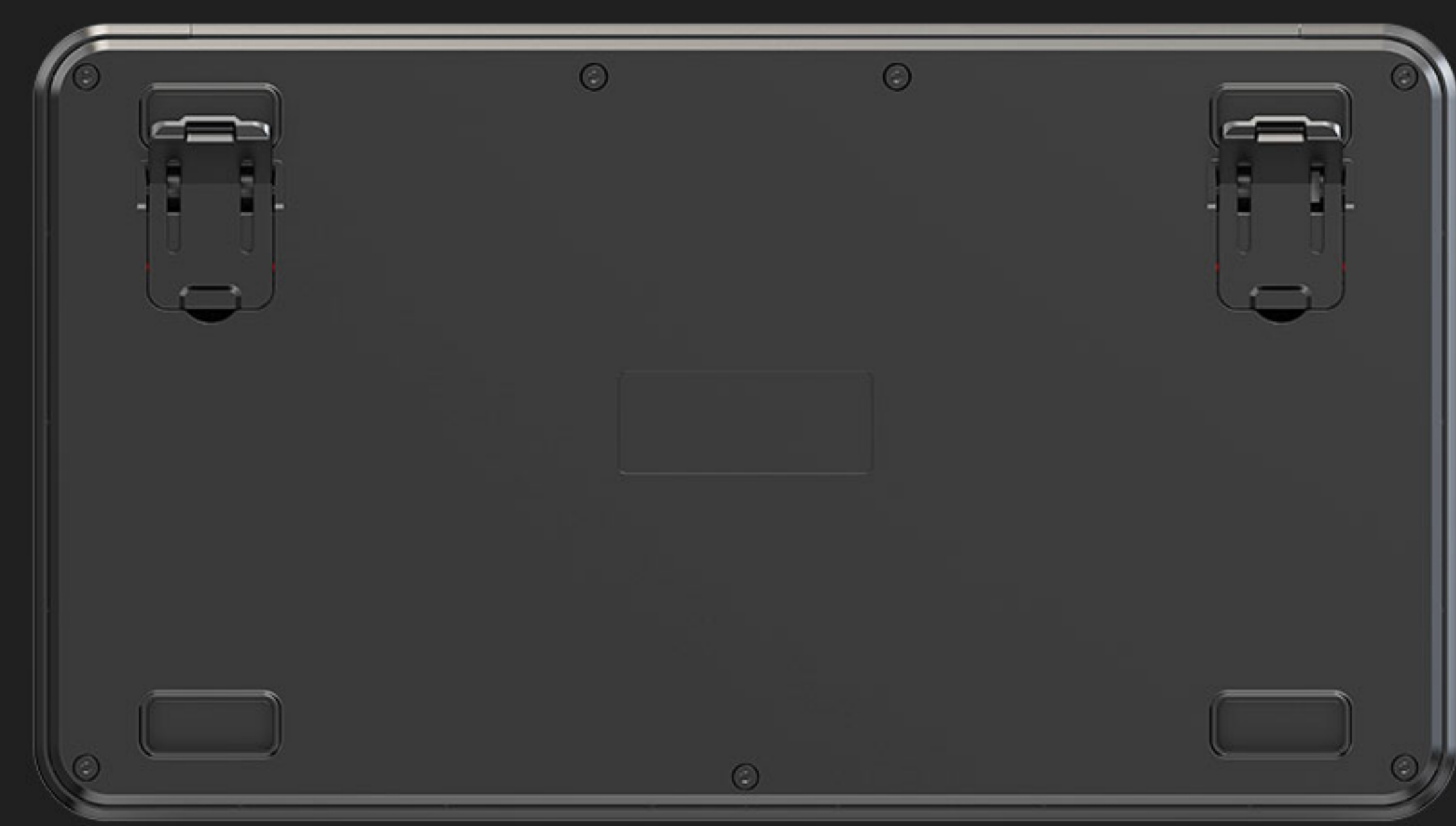
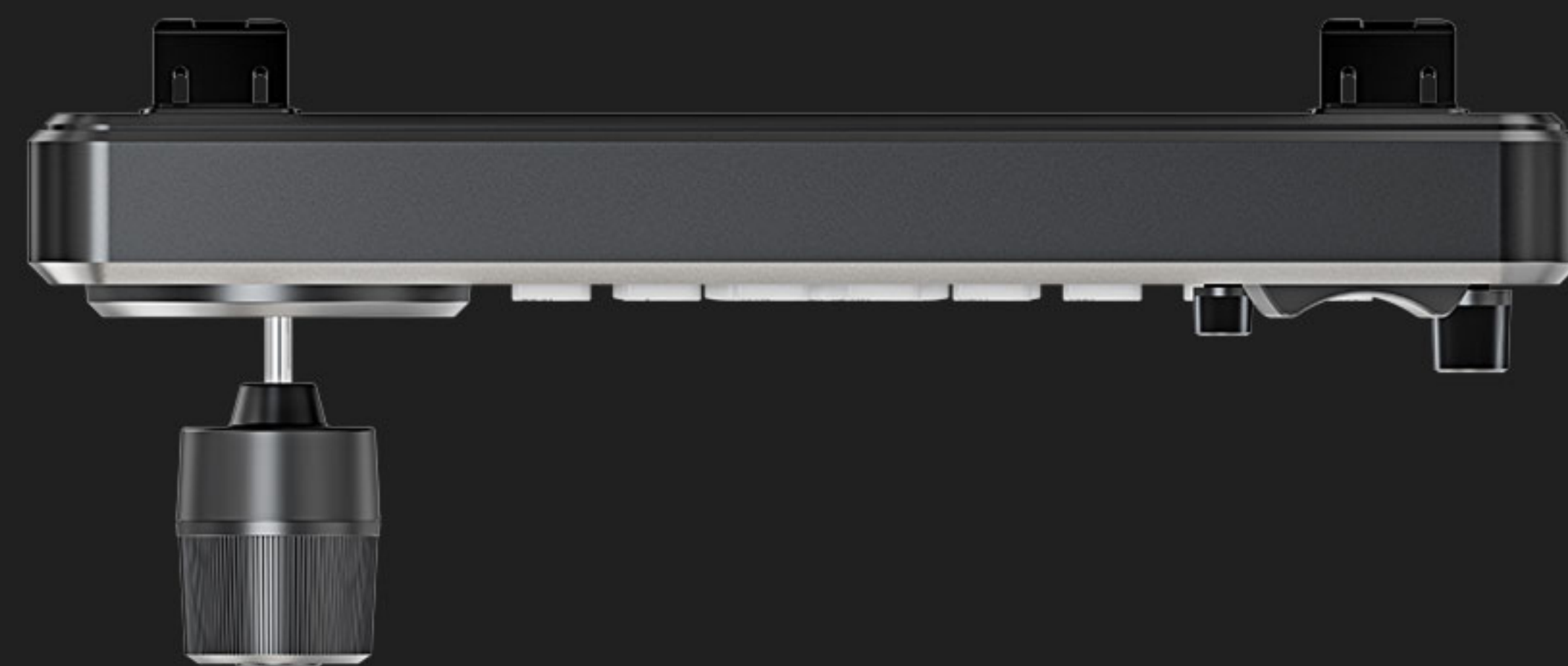
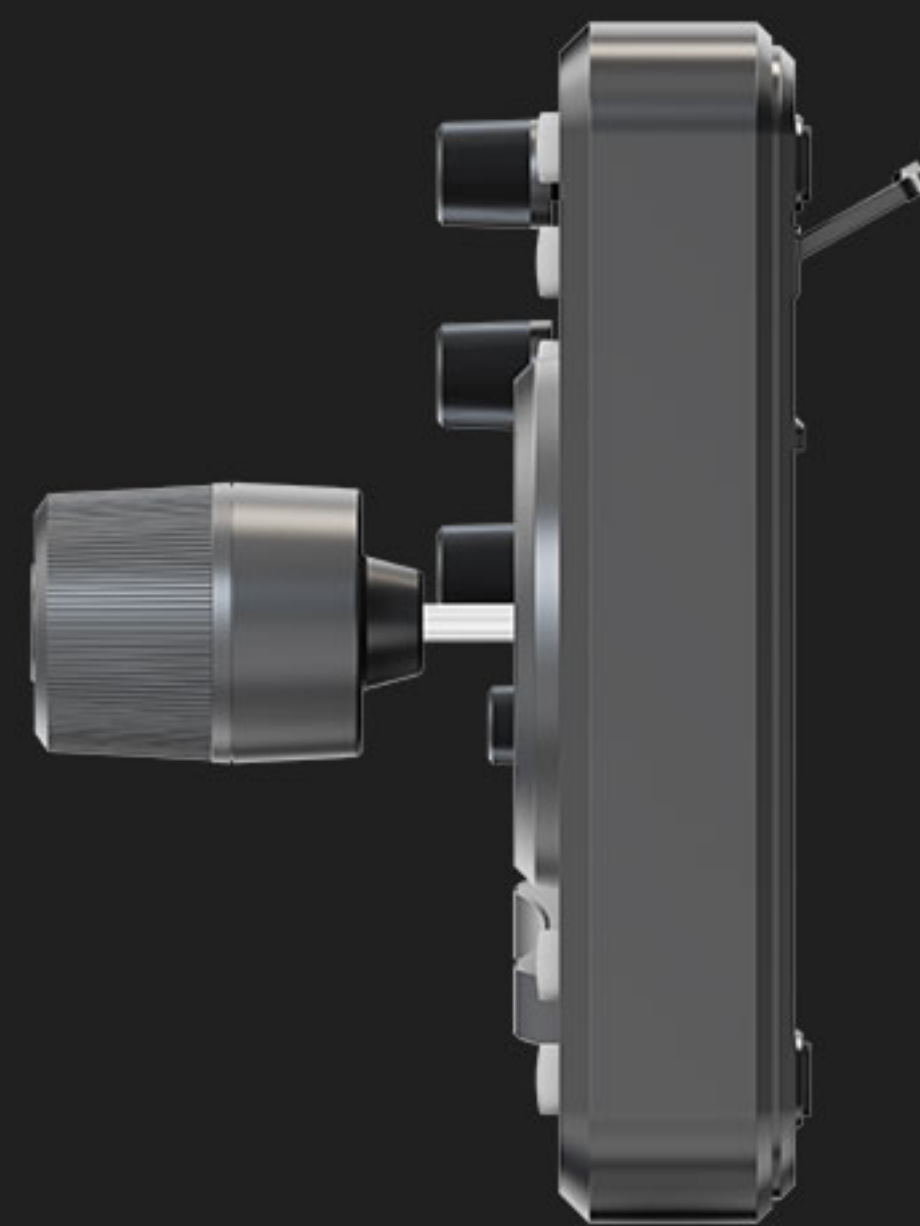
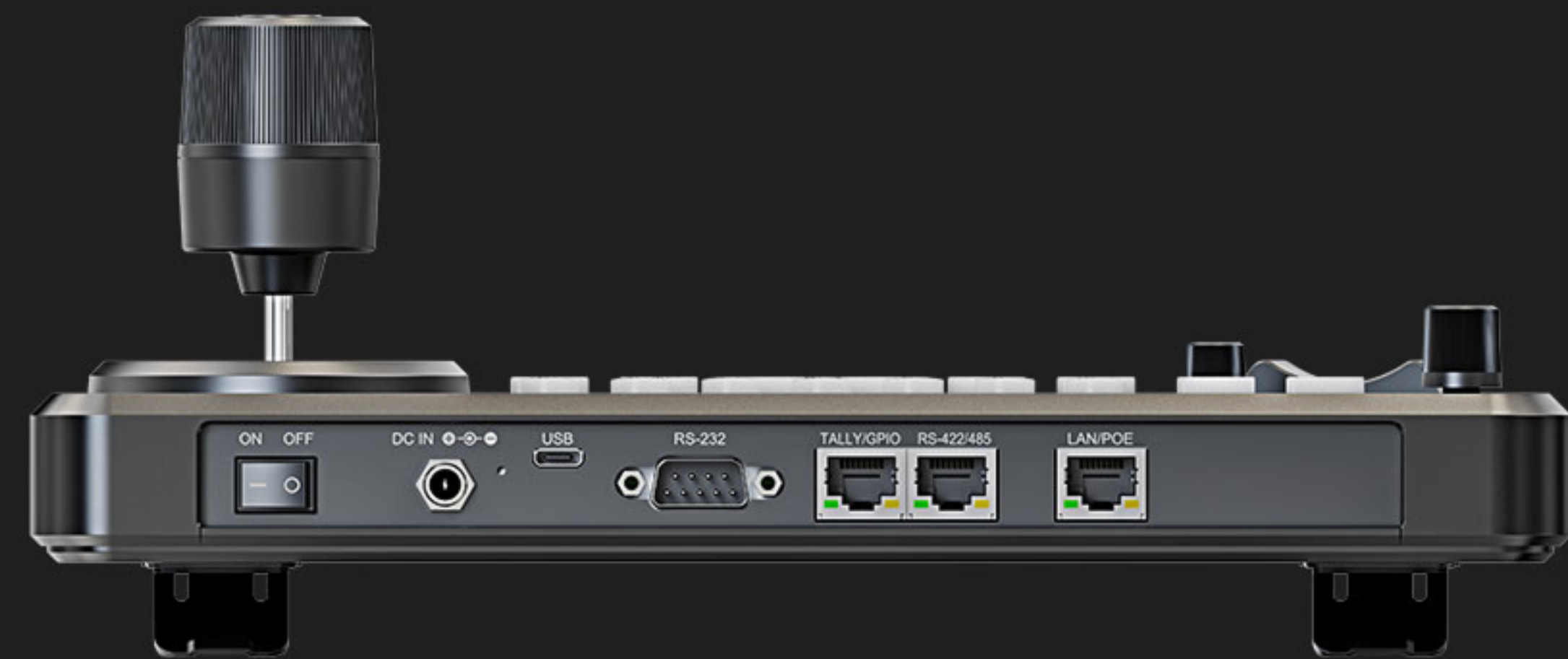
SPORT LIVE



INTERVIEW

Application Fields

The controller can be widely used in various field events, such as church, concert, education, interviews, sport live and other live broadcast activities.



100.5mm

282mm

158mm

SPECIFICATIONS

		PKC3500	PKC3500-NDI
CONNECTIONS	Interfaces	IP(RJ45)×1, RS-232×1, RS-485/RS-422×1, TALLY×1, USB2.0 (For upgrade)	
	IP Protocol	ONVIF, VISCA	ONVIF, VISCA, NDI® HX2
	Serial Protocol	PELCO-D, PELCO-P, VISCA	
	Serial Baud Rate	2400, 4800, 9600, 19200, 38400, 115200 bps	
	LAN Port	1000M×1 (PoE/PoE+: IEEE802.3 af/at)	
USER INTERFACES	Display	5-inch Screen	
	Knob	Quickly control iris, shutter speed, gain, auto exposure, white balance, etc.	
	Joystick	Pan/Tilt/Zoom	
	Camera Address	Up to 255	
	Camera Preset	Up to 255	
POWER	Power	PoE/ DC 7~24V	
	Power Consumption	PoE: <8W, DC: <8W	
ENVIRONMENT	Working Temperature	-20°C~60°C	
	Storage Temperature	-20°C~70°C	
DIMENSION	Dimension(LWD)	282×158×47mm/ 282×158×100.5mm(With joystick)	
	Weight	Net: 1089g	

ACCESSORIES



12V 2A Power Adapter